

HOLDEN TORQUE



January - February 2021

ISSUE No. 214



PAULINE

AKA THE BOSS BEHIND THE BOSS

HCC INFO

Club & Committee 2020 – 2021

President: **Tim Tapping** 0406 997 177

Vice President: **Robyn Jones**

Treasurer / Merchandise: **Pauline Wainwright**

Secretary / Vehicle Registrar: **Bruce Jones** 0408 686 659

Events Coordinator: **Position Vacant**

Property Manager: **Daryl Pinner**

Newsletter / Website / Public Relations: **Craig Poole** 0407 974 140

eyepeeler@outlook.com

Holden Car Club of WA Inc.

**P.O. Box 514
JOONDALUP 6919**

Visit our website!

The Club Wants You!

The Holden Car Club of WA is always looking for members to plan, organize and help. So if you think you have something to offer the club, let us know!

For Newsletter Enquiries, For Sale & Wanted Ads or Website Enquiries contact Craig Poole

FRONT COVER:

Pauline's EJ

Disclaimer

The Holden Car Club does not accept responsibility for the truth or accuracy of the articles or advertisements appearing in this newsletter. It is incumbent on the readers to satisfy themselves as to the truth or accuracy of any of the articles or advertisements. All articles and advertisements are accepted in good faith by the club.

**Members to Advise
when they sell their
concessionally
licensed vehicles,
they need to advise
the registrar /
committee, so the
register stays up to
date!**

EVENTS RE-CAP

Mens Talk Fest



On Sunday 29th November the club attended an event run by “Men’s Talk Fest”. We had a good selection of cars turn up. It was a really windy day which wasn’t so good and kept numbers attending the event fairly low. The café was a good place to be for a nice latte!!



EVENTS RE-CAP

Christmas Show



On Saturday 5th December the club had its annual Christmas Dinner. It was an awesome turn out of club members and an even better selection of food to eat. Thanks to all who bought along a plate and particularly to the Jones family for arranging the chicken and President Tim for supplying the ham.

A good selection of gifts were donated to the Salvo's to give to the less fortunate.



EVENTS RE-CAP

Guildford Markets



It was a warm evening at Guildford night markets on Saturday 2nd Jan. The club had a good display of cars, apologies to the cars and owners not pictured.

The crew at Guildford Markets put on a great show and it's always a good evening.

Next event they do which we attend, you should make the effort to come along.



EVENT CALENDAR

HCCofWA Event	
Date: Tuesday 26 th January 2021	Event: Australia Day Breakfast
Meeting Point: RSL Clubrooms 1 Fred Bell Parade East Victoria Park	
Meeting Time: 6.30am	Departure Time: 7.00am
Details of Event: Australia Day Breakfast	
Venue: TBA	RSVP: Events Co-ordinator
HCCofWA Event	
Date: Friday 26 th Feb to Monday 1 st Mar 2021	Event: Busselton Weekend Away
Meeting Point: To be advised	\$50 Deposit required to be paid now
Meeting Time: TBA	Departure Time: TBA
Details of Event: Please put names down for rooms, plus Double / Twin or Family Room	
Venue: Busselton River Resort	RSVP: Events Co-ordinator
HCCofWA Event	
Date: Saturday 13 th March 2021	Event: General Meeting
Meeting Point: RSL Clubrooms 1 Fred Bell Parade East Victoria Park	
Meeting Time: 2.30pm	Departure Time:
Details of Event: Bi-monthly general meeting with afternoon tea supplied	
Venue: 1 Fred Bell Parade East Victoria Park	RSVP: Not Required
HCCofWA Event	
Date: Sunday 11 th April 2021	Event: Curtin FM Classic Car Spectacular
Meeting Point: RSL Clubrooms 1 Fred Bell Parade East Victoria Park Cost – Free this year	
Meeting Time: 8.00am	Departure Time: 8.30am
Details of Event: Live entertainment, Artisan Stalls, Food Vans, Curtin FM broadcasting live	
Venue: Trinity Playing Fields	RSVP: Events Co-ordinator
HCCofWA Event	
Date: Sunday 18 th April 2021	Event: Shannon's Classic Car Show
Meeting Point: Ascot Racecourse 71 Grandstand Rd, Ascot WA 6104	
Meeting Time: 8.00am	Departure Time: 3.00pm
Details of Event: CMC Annual Event Shannon's Classic Car Show	
Venue: Ascot Racecourse	RSVP: Events Co-ordinator

ADDITIONAL EVENTS THAT YOU MAY USE YOUR CONCESSIONALLY LICENSED VEHICLE ON

Saturday Night Fever – at Stocklands Baldivis Shopping Centre (<https://www.facebook.com/Saturday-Night-Fever-Perth-509048229275030/?fref=ts>)

Steel Bumper Car Cruizes WA (<https://www.facebook.com/groups/11558900658/>)

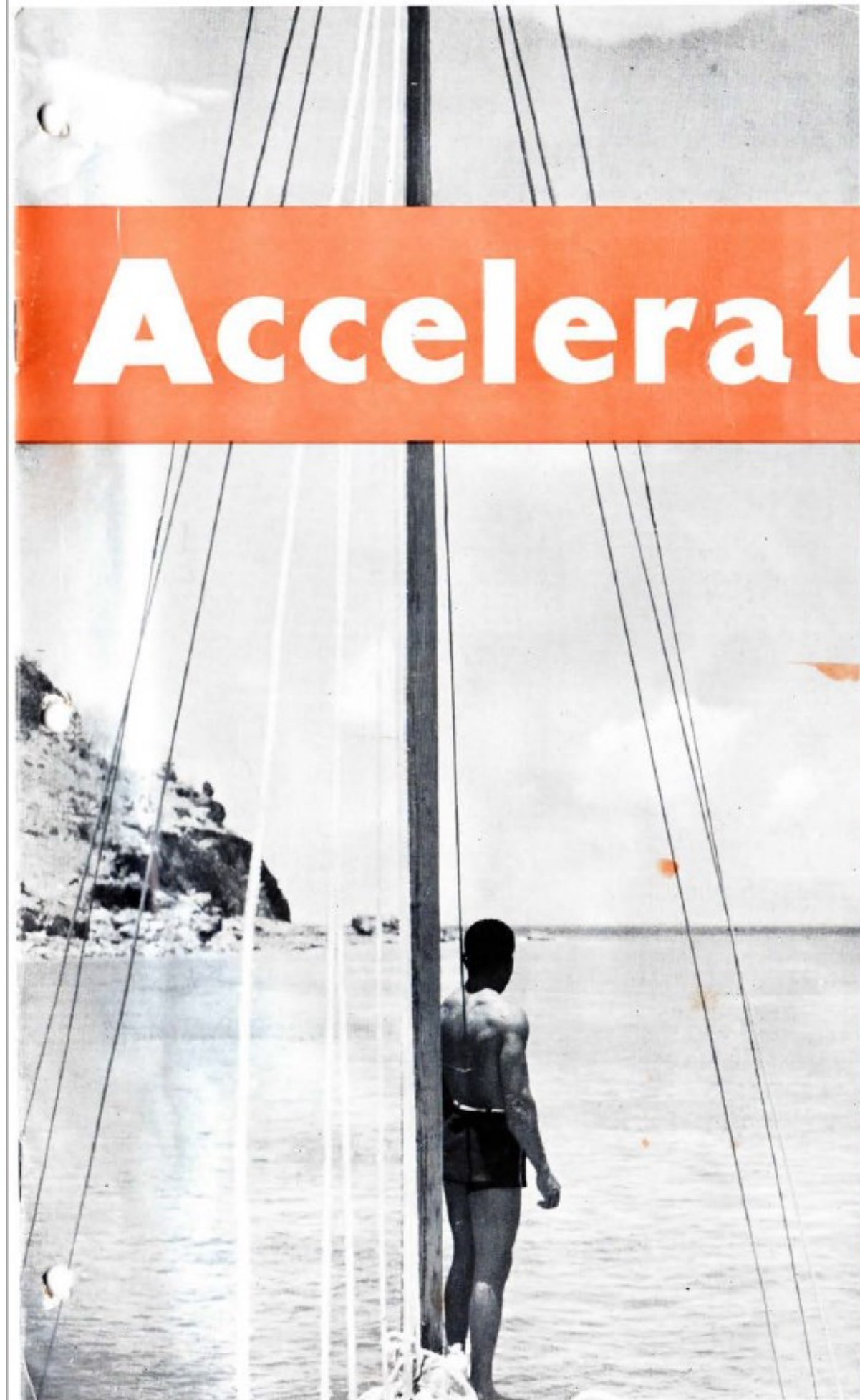
Custom Cars & Coffee – at Motor Plex / Speed Dome (<https://www.facebook.com/customcarsandcoffee/?fref=ts>)

Northern Steel – Bunnings Joondalup (<https://www.facebook.com/northernsteelcars/>)

Classic Cars and Coffee – UWA (<https://www.facebook.com/perthclassiccarsandcoffee/>)

Shannons Southern Coffee Cruise Mandurah – Hall Park (<https://www.facebook.com/SouthernCoffeeCruise/>)

The best source of information for these events is Facebook, links are provided above. These events will not be listed in our event calendar.



JANUARY-FEBRUARY, 1951
VOL. 8, No. 1.



Accelerator

**NATIONAL
AUTOMOTIVE
SERVICE
COMPANY**

Parts and Accessories
Division of General
Motors-Holden's Ltd.

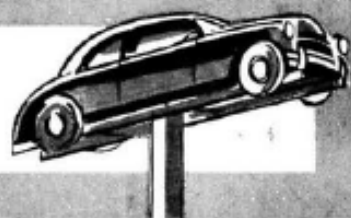
In this Issue:

The Necessity for
Good Parts, Good
Tools Page 3.

Holden Service
Pages 5, 18.

Vauxhall, Bedford,
Pontiac Service
Pages 6, 7.

Chevrolet Service
Pages 13, 14, 15.



HOLDEN REAR END

Body, Springs, Shock Absorbers, Tank

REAR END RATTLES have sometimes been experienced from each of the following on Holden units operating in service :—

- (a) Loose luggage trunk side linings.
- (b) Rear spring slap.
- (c) Rear shock absorbers.
- (d) Loose fuel tank baffles.

When diagnosing for which of the above items is responsible for the noise, a set procedure should be followed; this will save time and expense. The procedure recommended is as follows :—

(a) Check the luggage trunk side lining for adhesion to the rear quarter panel, and if linings are loose, remove from the body by unscrewing the four attaching screws located along the lower edge. (Road test unit before proceeding further.)

Note: Should testing prove that loose lining panels are the cause of the rattle, apply a liberal coating of Black Elastic Cement M6412, to the upper curved underside face of each lining panel approximately three inches wide and also to the corresponding position of the rear quarter panel before replacing with the attaching screws.

(b) Should operation (a) fail to eliminate the noise, or the initial check reveal that side linings are satisfactorily solutioned to the quarter panels, proceed as follows for elimination of rear spring slap which can be caused by the leaves slapping against the rebound clips under the spring cover or by slight irregularity of leaves or slight opening up between leaves.

Fabricate two U-shaped spring clips and attaching bolts for each rear spring from flat mild steel to a size that will fit neatly over the rear spring covers and so that the tightening of the bolt will place slight pressure against the side of the spring leaves and be reasonably tight top and bottom. The clips should be installed front and rear adjacent to the bulge in spring covers and toward the rear axle.

Road test unit and if unsuccessful remove clips and proceed with rear shock absorber test.

(c) Disconnect shock absorber arms from the body individually and road test. If shock absorber is noisy, replace it with a new one.

It is important that instructions as directed for item (a) and (b) be carried out, as the disconnecting of shock absorbers with loose linings may temporarily eliminate or quieten the noise and indicate it to be the shock absorber, whereas the true cause is a lining board rattle or spring leaf rattle accentuated by the thrust of the shock absorber.

(d) In the event that operations (a), (b) and (c) fail to eliminate the noise, and other tests indicate that the rattle is in the fuel tank remove the tank and proceed as follows :—

1. Drill two $\frac{3}{8}$ in. dia. holes in the underside of tank and lower flange of tank baffle at positions and by the method indicated in Fig. 1.
2. Open out the $\frac{3}{8}$ in. dia. hole in the tank only (not the baffle) to $\frac{1}{2}$ in. dia.
3. Measure the depth between tank and baffle flange at each hole as indicated in Fig. 1 (this should be approximately $\frac{3}{8}$ in.) and cut a tubular spacer of a corresponding length from $\frac{1}{8}$ in. dia. copper tubing. Cut one side of the spacer with a hacksaw lengthwise to permit expansion during the following operation.
4. Place the spacer in position as indicated, taking care not to let it fall into the tank and expand the spacer inside the tank with a pointed punch made from a piece of steel rod $\frac{3}{8}$ in. dia.

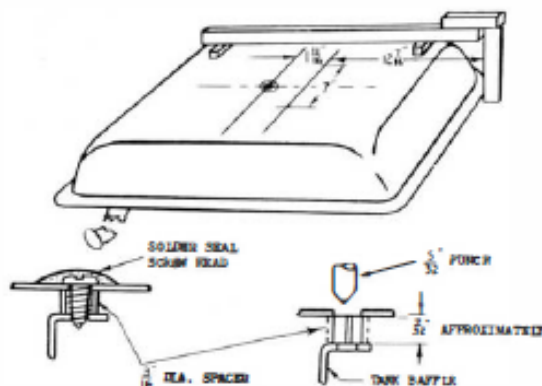


Fig. 1

5. Attach the tank, tank baffle and spacer together with two $\frac{1}{4}$ in. x 6 Binding Head self-tapping screws and solder seal around head of screw, as shown in section, Fig. 1.

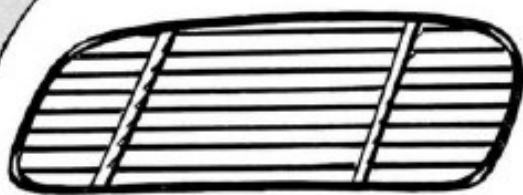
Caution: The design of the tank is such that a metallic noise can be produced with the unit stationary by pushing the underside of tank up against the lower end of the baffle. This condition is normal and is not an indication that the tank rattles when travelling.

[Service Information continued on page 6.

Distinctive!

Practical!

Popular!



VENETIAN BLINDS FOR ALL THESE GENERAL MOTORS CARS

Part Nos.		List Price
7405236	HOLDEN	£3 10 0
M30382	CHEVROLET 1939-41, 1946-48	4 5 0
	BUICK 1939-40	
	PONTIAC 1939-41, 1946-48	
M30593	OLDSMOBILE 1939-41, 1946-48	6 5 0
	CHEVROLET 1949-50	
	OLDSMOBILE 1949-50	
M30594	PONTIAC 1949-50	3 17 6
	VAUXHALL VELOX and WYVERN IMPORTED BODY	
M30595	VAUXHALL VELOX and WYVERN	3 17 6
	AUSTRALIAN BODY	

All prices plus tax.

YOUR MAIN SELLING POINTS—

- NASCO Venetian Blind protects rear seat passengers from direct rays of the sun.
- Installation takes seconds only—can be done while your client waits.
- Slats are re-inforced to ensure quietness.

SERVICE INFORMATION—continued.

TRANSMISSION LUBRICANT LEAKING INTO CLUTCH HOUSING

Pontiac—1946-1948 Models

Some synchro-mesh clutch housings have been found to have a step on the bottom of the counter bore, location A, Fig. 1, which locates the clutch release bearing support. In some cases the small step was found to be approximately .030 in. high. This prevents the clutch release bearing support from sealing with the gasket which is only .007 in. thick.

In all cases of leakage of the transmission lubricant into the clutch housing, inspection should be made to see that the bottom of the counter bore, as shown in Fig. 1 is properly finished, and that the clutch release bearing support flange is not bent and has no burrs which could prevent the gasket from sealing.

Corrective measures can be taken by chamfering the outer corner of the clutch release bearing support as shown in Fig. 2.

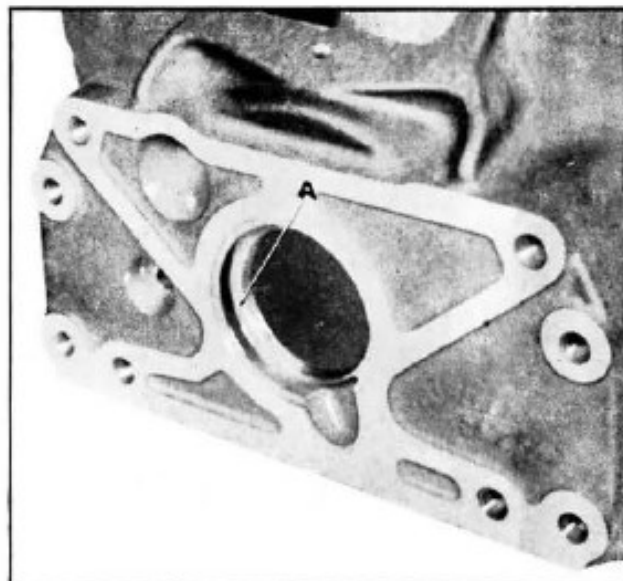


Fig. 1

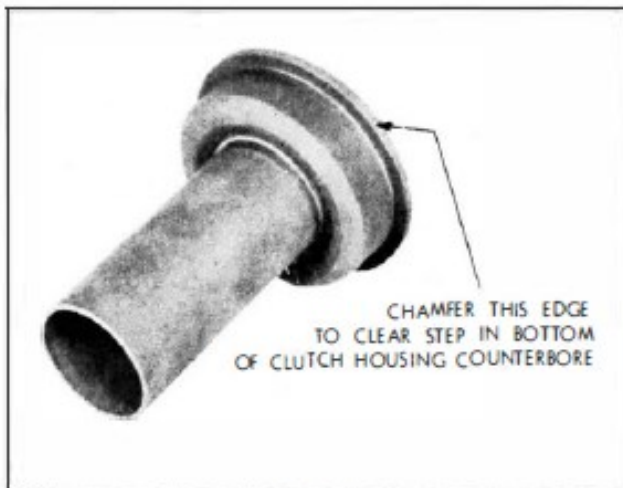


Fig. 2

valuable
editions
NOW
available
for your
work-
shop
and
parts
depart-
ment

Orders for the Manuals and Catalogues shown on this page may be sent to any NASCO Distributor, General Motors Dealer, or direct to NASCO. If ordering from NASCO please enclose a cheque to cover the cost of your order, including postage.

WORKSHOP MANUALS

PARTS BOOKS



GM-H Standard Times: This manual lists times that service jobs should take on 1946-48 GM-H vehicles including Holden. 7/6 plus 6d. postage.



1939-48 Vauxhall Wyvern. Fully illustrated. Explains correct procedure for all service operations. Price 17/6 plus 1/- postage.



Holden (new illustrated edition): Simplifies ordering of parts and accessories. Indexed to provide easy reference. Exploded views identify each component part. 8/6 plus 6d. postage.



1949-50 Vauxhall Velox and Wyvern: Includes Bedford 12 h.p. model PC Supplement. Manual with Supplement £1 2/6 plus 1/- postage. Supplement only 5/3 plus 3d. postage.



1946-49 Chevrolet Passenger Cars: Contains more than 270 pages and 350 illustrations and diagrams. 1949 data included as Supplement. Trade Nett Price 15/6 plus 1/- postage.



1931-48 Vauxhall-Bedford: Components of all main assemblies are illustrated. All models are clearly identified. 15/- plus 1/- postage.



Vauxhall Body Service: Covers all H, I and J imported models. Has supplement on imported 1949 Velox and Wyvern. 13/6 plus 6d. postage.

All prices shown on this page are Trade Nett. In the case of Workshop Manuals, Sales Tax is not applicable. In the case of Parts Books, Sales Tax does apply.



1946-48 Chevrolet Cars, Trucks: This is a Supplement (9-CML-49) covering 1946-48 models and should be used in conjunction with catalogue (3-CML-47) which dealt with models to 1946. 4/- plus 6d. postage.

BACK PAGE



Hey HCC Folk,

Hope you all had a good Christmas and New Years.

This time of year it really is a good time to have a Sandman. Good summer cruising.

Till next issue

Safe and Happy motoring.

Craig Poole...

